

Treeplanting...

Newport Forest Saturday November 14 2009 2:30 - 5:30 pm

weather: prec. omm; RH 75%; BP 98.7 kPa; calm; clr; T 19° C
purpose: to plant trees
participants: Kee, Steve

We picked up the following saplings from Sloan's Nursery today:

no. sp. size

3 Red Oak 4'
3 Bur Oak 4'
3 Sugar Maple 4'
3 Silver Maple 4'

We planted six of the trees in the Regeneration Zone (RZ), leaving the remainder (wrapped in wet burlap) for later in the week.

The soil had retained much of its moisture from the October rains and was easy to dig. Steve remarked that some of his holes had abundant earthworms, while others had barely any. (One wonders if the wormy sites might make the most promising locations.) As usual, I selected the planting spots at random, but all within a corner of the RZ that, until now, had been neglected. (See satellite image of RZ below.)

We worked straight through until sunset, planting slowly and carefully, drawing our water from the creek. It was not ideal planting weather, being hot and dry, with little rain in the offing for several days, at least. I will try to get the remaining trees in the ground before next weekend.

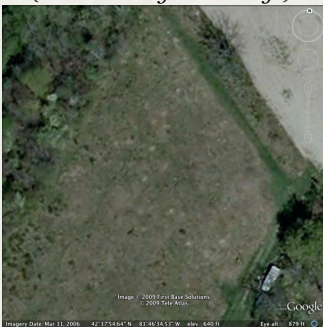
no bird report (few about)

no new species

changed card on trail cam

IMAGES:

(click on image to enlarge)



Google Earth image of RZ (Mr31/06): Note larger planting holes are visible as small, whitish blobs; 310 trees have been planted to date. Today's planting area was within the angle between track & trail at RHS of image. (white rectangle is trailer)

(click on image to enlarge)



doe caught by trail cam as she enters picture zone at 7:51 am (EST) last friday morning

(click on image to enlarge)



Pileated Woodpecker "dig" on side of rotted Bitternut tree photo courtesy of Bruce Parker