

## Another Insect Report...

*(click on image to enlarge)*



*This little jewel is NOT an Emerald Ash Borer (in case you were wondering) but the treehopper *Ceresa basalis* or what I call the 'Emerald Tree Hopper.'*  
*photo courtesy of Steve Marshall*

*(click on image to enlarge)*



*A pair of romantically inclined Alder Spittlebugs (*Clastoptera obtusa*). Spittlebugs are not often seen, owing to being surrounded by a bubbly mass of "spittle" which they secrete to hide themselves on plant stems. We found our first specimens of this species in the malaise traps set up by Nina Zitani in the Lower Meadow in 2005.*

*photo courtesy of Steve Marshall*

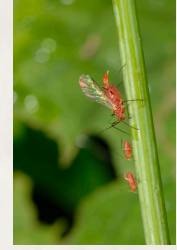
*(click on image to enlarge)*



*The Tule Bluet (*Enallagma carunculatum*) resting between mosquito sandwiches. "The enemy of my enemy is my friend" This was a new species for us.*

*photo courtesy of Steve Marshall*

*(click on image to enlarge)*



*Brown Ambrosia Aphid (*Uroleucon ambrosiae*) adults & nymphs on a stem. An aphid sucks plant juices and exudes from its anus unwanted sugary wastes that ants eagerly lick up. Two little black pipes on back (cornicles) emit chemical attractants. Female aphid here appears to be giving birth to a new nymph.*

*photo courtesy of Steve Marshall*