

Insect Report



at left; NewRove Beetles are rather dull-coloured insects for the most part, usually black or brown. But this species is marked with bright yellow, making it an easy ID. Rove beetles have only vestigial wings and are therefore essentially ground dwellers -- unless they climb a plant, as here.

Yellow-bellied Rove Beetle *Trypoperus frison* NF SM J130/0
photo courtesy Steve Marshall



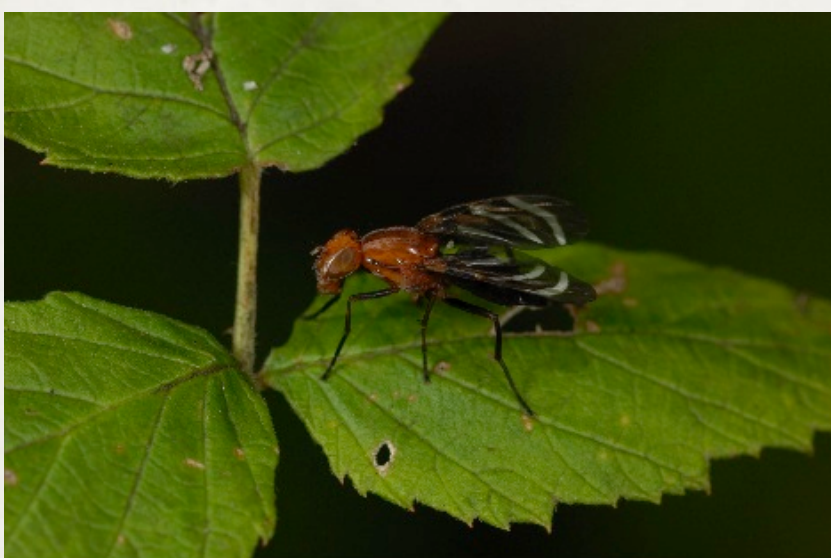
at left; Hover Flies, which belong to the family Syrphidae (the Flower Fly Family), frequently resemble wasps or bees, what some biologists call "protective mimicry." They hang out with bees, as they have the same diet. It is worthwhile, with some of these images to drag them onto your desktop to enjoy the detail, as in the specimen below. hover fly *Taxomerus germinatus* NF SM J130/09
photo courtesy Steve Marshall



at left; Fireflies of the genus *Photinus* all look pretty much alike. Both larvae and adults are a) bioluminescent, b) predacious on other insects. There are several species from *Photinus* and other genera, such as *Pyralis*, in our area. firefly *Photinus* sp. NF SM J130/09
photo courtesy Steve Marshall



at left; Here is a picture of a *Photinus* firefly (different sp?.) from below, showing the bioluminescent organ at the end of its abdomen.
photo courtesy John Pearson (BugGuide.net)



at left; The picture-winged flies (otitidae) are all small flies that are easy to miss, yet worth a close look for the interesting pictures, a variety of speckles and bands to be found on the wings of these critters. This one has three incurved (hence the scientific name) white bands on its wings.

'Three-banded Otitid' *Tritoxera incurvata* NF SM J130/09

photo courtesy Steve Marshall