

## Insect Report

(click on image to enlarge)



A Heterocerid (Mud-loving) beetle which, evidently, loves mud! This particular individual appears to be *Neoheterocerus* sp. (AKD)  
photo courtesy Steve Marshall

(click on image to enlarge)



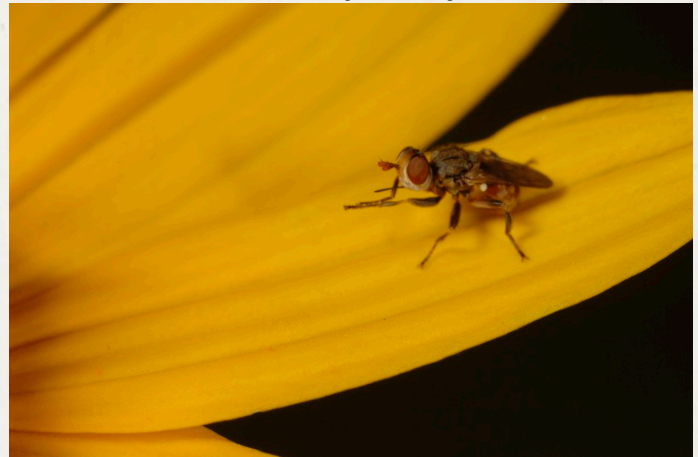
The 'Diamond-backed Spittlebug' or *Lepryonia quadrangularis* is normally covered with "spittle" as it hugs a plant stem, sucking out fluids from the tracheids or conducting vessels within the stem. (Cercopidae -- Spittle Bugs) A rare glimpse of a common insect! Head of creature points up here, with eyes just under a shieldlike covering.  
photo courtesy Steve Marshall

(click on image to enlarge)



The Two-spotted Tree Cricket or *Neoxabea bipunctata* is a tree cricket (fam. Gryllidae subfam. Oecanthinae) This and other Tree Crickets sing from bushes and plants during the middle-to-late summer, some during the day, some at night. photo courtesy Steve Marshall

(click on image to enlarge)



*Zodion* belongs to the Thick-headed Fly family (Conopidae). This doesn't mean that the fly is intellectually slow . . . perhaps quite the contrary photo courtesy Steve Marshall