

CS1033 ASSIGNMENT 2

By Group 1

Without , there is no ME!



www.facebook.com/mysistersplacelondon



[@mysistersplace](https://twitter.com/mysistersplace)

Purchase M.E. jewelry: Tuesdays to Thursdays
10am - 12pm and 1pm - 3pm
at My Sisters' Place, 566 Dundas Street

www.mysistersplacelondon.ca

To book tables or for more information contact:
Lynn Blumas, M.E. Program Coordinator,
for details at 519-679-9570 ext. 25
l.blumas@wotch.on.ca

Where did you sleep last night?

Original jewelry for sale
created by the artisan
women of My Sisters' Place.
A home, for the homeless.

Tuesdays to Thursdays
10am - 12pm and 1pm - 3pm
My Sisters' Place, 566 Dundas Street



WITHOUT YOU, THERE IS NO ME.

To book tables or for more information
contact: Lynn Blumas, M.E. Program Coordinator
for details at 519-679-9570 ext. 25
l.blumas@wotch.on.ca

www.facebook.com/mysistersplacelondon
Twitter: @mysistersplace
Website: www.mysistersplacelondon.ca





MSP

My Sisters' Place

M.E. Micro-Enterprise

BEAUTY · COMMUNITY · PURPOSE



*Original and Creative Jewelry designed
by women at risk of homelessness*



WITHOUT YOU, THERE IS NO M.E.!

Micro-Enterprise (M.E.)
My Sisters' Place
566 Dundas Street
London, Ontario N6B 1W8
Open Tuesdays to Thursdays: 10am-12pm &
1pm-3pm

Come book a table to sell M.E. products at your
events or corporate meetings! For more infor-
mation contact M.E. Program Coordinator:
Lynn Blumas, 519-679-9570 ext. 25
l.blumas@watch.on.ca

Stay Connected:



[www.facebook.com/mysisters-
placelondon](http://www.facebook.com/mysisters-placelondon)



@mysistersplace



www.mysistersplacelondon.ca

Original Creative Jewelry



**WITHOUT YOU
THERE IS NO ME!**



www.facebook.com/mysistersplacelondon



www.mysistersplacelondon.ca



[@mysistersplace](https://twitter.com/mysistersplace)



To book tables or for more information contact
Lynn Blumas, M.E. Program Coordinator
for details at 519-679-9570 ext. 25
l.blumas@wotch.on.ca

Tuesdays to Thursdays 10am - 12pm and 1pm - 3pm at My Sisters' Place, 566 Dundas Street



MY SISTERS' PLACE

M.E. MicroEnterprise

Without You, There Is No ME!



Creating Original Jewelry,
Improving Women's Lives



About the Artists: Women who have faced or are facing risks of homelessness, abuse, addictions, trauma, isolation and poverty


Come See our Jewelry!


~My Sisters Place
(566 Dundas Street)

~Tuesday's to Thursday's:

10am-12pm and 1pm-3pm

 www.facebook.com/mysistersplace

 [@mysistersplace](https://twitter.com/mysistersplace)

 www.mysistersplace.ca

**Book an ME Sales Table
For Your Event**

Contact ME Program
Coordinator for Details:

Lynn Blumas

~ 519-679-9570 Ext. 25

~ l.blumas@wutch.on.ca

My Sisters' Place

a safe, supportive community for women facing homelessness

Micro Enterprise Program



Giving at risk women the chance to create something beautiful...

Show your support:
*Book an M.E. sales table for your event!
Call Lynn Blumas, Program Coordinator at 519-679-950 ext. 251
email: blumas@wotch.on.ca
*Spread the word about M.E.
*Donate today at the My Sisters' Place location

When // Where
Tues and Thurs: 10am-12pm / 1pm-3pm
at My Sisters' Place
566 Dundas Street
*Without You,
there is no M.E.*

www.facebook.com/mysistersplacelondon
 [@mysistersplace](https://twitter.com/mysistersplace)
 www.mysistersplacelondon.ca

compassion
body
respectful
safe
nurture
resilient
sharing
empathy
mind
women
community
inclusive
spirit
support
accessible
respect
home
welcoming
homeless
diversity
holistic



My Sisters' Place



M.E. Micro Enterprise

Without you, There Is No ME!



To Book a Table
Contact Lynn Blumas,
M.E. Program Coordinator,
at 519-679-9570 ext. 25

**By Contributing,
You Are Supporting
Talented Artisans
Who Strive To Overcome
Financial Hardship**

Creating Jewelry,
Improving Lives



@mysistersplace



/mysistersplacelondon



l.blumas@wotch.on.ca



mysistersplacelondon.ca

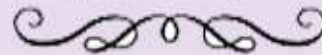
**Tuesdays to Thursdays
10am - 12pm and 1pm - 3pm
at My Sisters' Place,
566 Dundas Street**



My Sisters' Place MICRO-ENTERPRISE

Without you, there is no M.E.!

The M.E. Program run by My Sisters' Place London allows women at risk of homelessness to be in control of their own lives by providing them with an opportunity to express their artistic talents through the creation of beautiful, unique pieces of jewelry.



*To Purchase Handmade Jewelry
by our local Artisans, visit:*

My Sisters' Place, 566 Dundas Street
Tuesdays-Thursdays
10 am - 12 pm and 1 pm - 3 pm

To book an M.E. table at your event:
Lynn Blumas, M.E. Program Coordinator
519-679-9570 ext. 25
l.blumas@watch.on.ca



www.facebook.com/mysistersplacelondon



@mysistersplace



www.mysistersplacelondon.ca



My Sisters' Place Micro-Enterprise

"Without You, There Is No Me!"
At Risk Women, Creating Beauty

Book A Table To Sell M.E. Products At You Next Function!



*Lynn Blumas,
M.E. Program Coordinator
519-679-9570 ext. 25
lblumas@wotch.on.ca*



 www.facebook.com/mysistersplacelondon
 [@mysistersplace](https://twitter.com/mysistersplace)
 www.mysistersplace.com

*On Sale:
Tuesday-Thursday:
10 AM - 12PM and 1PM-3PM
My Sisters' Place
566 Dundas Street*

Without you,
there is no M.E.!



My Sister's Place
A Safe Place for Women and their Children

**To purchase Micro-Enterprise jewelry made by those in need, visit us:
Tuesdays to Thursdays 10am - 12pm and 1pm - 3pm at My Sisters' Place, 566 Dundas Street**

Contact us at:

www.facebook.com/mysistersplacelondon
[@mysistersplace](https://www.instagram.com/mysistersplace)
www.mysistersplacelondon.ca



To book tables or for more information contact: Lynn Blumas, M.E. Program Coordinator, for details at 519-679-9570 ext. 25 l.blumas@watch.on.ca

MY SISTERS' PLACE

Without you, there is no ME!

FROM THE WEAK, FOR THE WORLD



ORIGINAL

CREATIVE

CONTACT US:

FACEBOOK PAGE: WWW.FACEBOOK.COM/MYSISTERSPLACELONDON
TWITTER: @MYSISTERSPLACE
WEBSITE: WWW.MYSISTERSPLACELONDON.CA

HOURS:

TUES-THURS
10AM-12 PM
1 PM-3 PM
MY SISTERS' PLACE, 566 DUNDAS
STREET

My Sisters' Place



Micro-Enterprise



"Without you, there is no ME!"

Come help M.E. artisans by purchasing their Original and Creative Jewellery

You can purchase the jewelry at:

My Sisters' Place - 188 Dundas Street
W. - 1st Floor | Open 12pm and 1pm to 3pm

OR

Book a table to Sell M.E. products at your events

for more info contact: Lynn Thomas
(519) 673-9570 ext 251
email: thomas@watch.ca



www.mysistersplacelondon.ca



@mysistersplace



www.facebook.com/mysistersplacelondon



Giving less fortunate women a chance

Donate your seldom worn or broken jewelry

My Sister's Place

M.F. Micro Enterprise



Without you, There is no M.E!



Making jewelery,
shining light on my life

J
e
w
e
l
e
r
y

Contact Information:

- Facebook Page: www.facebook.com/mysistersplacelondon
- Twitter: @mysistersplace
- Website: www.mysistersplacelondon.ca

Address:
 Micro Enterprise (M.E.)
 My Sisters' Place
 566 Dundas Street

To purchase M.E. jewelery:
 Tuesdays to Thursdays :
 10am - 12pm and 1pm - 3pm

To book tables or for more information contact:
 M.E. Program Coordinator, Lynn Blumas
 Phone: 519-679-9570 ext. 25
 Email: l.blumas@wotch.on.ca

O
r
i
g
i
n
a
l

a
n
d

c
r
e
a
t
i
v
e

My Sister's Place

Without you, there is no ME!

Micro-Enterprise (M.E.). M.E. is a group of women at risk of homelessness gathering together to create Original and Creative Jewelry.

Purchasing Jewellery?
Tuesday to Thursday 10am-12pm
and 1pm-3pm at My Sister's Place
566 Dundas St

Facebook: www.facebook.com/mysistersplacelondon

Twitter: [@mysistersplace](https://twitter.com/mysistersplace)

Website: www.mysistersplacelondon.ca



To book tables for events or for more information contact:
Lynn Blumas M.E., Program Coordinator at 519-679-9570 ext. 25
or l.blumas@wotch.on.ca

My Sisters' Place



M.E: Micro- Enterprise
Original & Creative Jewelry

Created by struggling woman at risk of homelessness

"Without you, there is no M.E!"



For Information to Book Tables Contact:
M.E Program Coordinator, Lynn Blumas
(519) 679-9570 ext. 25, l.blumas@watch.on.ca

Contact:
www.facebook.com/mysistersplacelondon
[@mysistersplace](https://www.instagram.com/mysistersplace)
www.mysistersplacelondon.ca

Available Hours:
Tuesdays to Thursdays
10am-12pm & 1pm-3pm
My Sisters' Place, 566 Dundas Street

My Sisters' Place

a safe supportive community for women facing homelessness



Help these women:

- receive a chance to make something beautiful
- learn how to operate a business
- gain companionship
- gain a sense of purpose

To book tables or for more information contact:

Lynn Blumas, M.E. Program Coordinator,

519-679-9570 ext. 25



l.blumas@wotch.on.ca

Micro - Enterprise

Without you, there is no M.E.!

Women at risk of homelessness creating
ORIGINAL and CREATIVE
JEWELRY
for you to purchase!

Tuesdays to Thursdays
10am-12pm & 1pm-3pm
at My Sisters' Place,
566 Dundas Street

 @mysistersplace
 [mysistersplacelondon](https://www.facebook.com/mysistersplacelondon)
www.mysistersplacelondon.ca



*"Without you, there is no ME!"
Micro Enterprise Jewelry*

My Sisters' Place

a safe haven for women facing homelessness

Tuesdays to Thursdays


10am-12pm


1pm-3pm



My Sisters' Place
566 Dundas Street
London, ON
N6B 1W8

@ www.mysistersplacelondon.ca

 @mysistersplace

 www.facebook.com/mysistersplacelondon



Want to book a table to
sell M.E. products?

For more information contact:
Lynn Blumas, M.E.
Program Coordinator
519-679-9570 ext. 25
l.blumas@watch.on.ca





**My Sisters'
Place**

Micro Enterprise

*Support London women,
and look great while doing it!*



What is Micro Enterprise?

Micro Enterprise, or M.E., is a group of empowered women who hand-craft original jewellery and accessories. These talented artisans are at-risk of homelessness.



To have M.E. originals at your next event, contact
Lynn Blumas, M.E. Program Coordinator
519.679.9570 ext. 25 or l.blumas@wotch.on.ca

Without you, there is no M.E!

566 Dundas Street
Tuesday - Thursday
10am - 12pm
1pm - 3pm



@mysistersplace



www.mysistersplacelondon.ca

facebook.com/mysistersplace

My Sisters' Place

*~ a safe, supportive community for
women facing homelessness ~*

"Without you, there is no M.E.!"
Original and Creative Jewelry

Tuesdays to Thursdays
10am - 12pm and 1pm - 3pm at My Sisters' Place
566 Dundas Street

To book tables at your events contact: Lynn Blumas, M.E. Program
Coordinator at 519-679-9570 ext. 25 l.blumas@wotch.on.ca

Facebook: [facebook.com/mysistersplacelondon](https://www.facebook.com/mysistersplacelondon)
Twitter: @mysistersplace
Website: [mysistersplacelondon.ca](https://www.mysistersplacelondon.ca)

M.E. Micro Enterprise



What's the difference between these two pieces of jewelry?

The item on the left is an original piece of creative jewelry crafted by women who have faced challenging circumstances such as homelessness, abuse, addictions, mental illness, under-employment, trauma, isolation and poverty. Each purchase helps support these women in turning their lives around.



Micro Enterprise



Jewelry Retailer

Come see our selection:
Tuesdays to Thursdays 10am - 12pm and 1pm - 3pm
at My Sisters' Place, 566 Dundas Street

Without you, there is no ME!



To learn more follow us on:

Facebook: www.facebook.com/mysistersplacelondon

Twitter: [@mysistersplace](https://twitter.com/mysistersplace)

Website: www.mysistersplacelondon.ca

To book tables or for more information contact:

Lynn Blumas, M.E. Program Coordinator

519-679-9570 ext. 25

l.blumas@watch.on.ca

Micro Enterprise

We

SHINE

for those
left in the dark

Original
&
Creative
Jewelry

Interested in selling
M.E.'s custom jewelry
at your own event?
Contact Lynn Blumas
M.E. Program Coordinator
519-679-9570 ext. 25
l.blumas@wotch.on.ca

Support our women!
Jewelry available at:
My Sisters' Place
566 Dundas Street
Tuesdays to Thursdays
10am - 12pm and 1-3pm

 www.facebook.com/mysistersplacelondon
 Twitter: @mysistersplace
www.mysistersplacelondon.ca



Without YOU, there is no M.E.!

Without you , there is no ME!



More INFO contact:
519-579-9570 ext.25 1 blumas@wotch.on.ca.
Lynn Blumas , M.E. Program Coordinator
You can purchase M.E. jewelery,
Tuesdays to Thursdays 10am-12pm and 1pm-3pm at
My Sister's Place, 566 Dundas Street

Facebook page:www.facebook.com/mysisterplacelondon

Twitter: @mysisterplace

Website:www.mysisterplacelondon.ca



My Sisters' Place

a safe, supportive community for women facing homelessness



To book tables or for more information contact:
Lynn Blumas, M.E. Program Coordinator,
519-679-9570 ext.
25 l.blumas@wotch.on.ca

To support women at risk of homelessness, purchase their jewelry:
Tuesdays to Thursdays 10am - 12pm and 1pm - 3pm at My Sisters' Place
566 Dundas Street

Without *you*, There wold be no *ME!*



<http://twitter.com/MySistersPlace>
<http://www.mysistersplacelondon.ca/>
<http://www.facebook.com/mysistersplacelondon>



My Sisters' Place



*Hand-crafted Original and Creative Jewellery
from underprivileged artisans!*

Contact Us!

Open Tuesdays to Thursdays
10 Am - 12 Pm & 1 Pm - 3 Pm
566 Dundas Street

Facebook: www.facebook.com/mysistersplacelondon
Twitter: [@mysistersplace](https://twitter.com/mysistersplace)
Website: www.mysistersplacelondon.ca

To book tables to sell M.E. jewellery at events or corporate meetings, or for more information contact: Lynn Blumas, M.E. Program Coordinator, for details at Lblumas@watch.on.ca 519-679-9570 ext. 25

*Without
you, there is
no M.E.!*



My Sisters' Place

No More
Homelessness

No More
Abuse

No More
Addictions

No More
Recidivism

No More
Trauma



Unemployment

No More
Isolation

No More
Poverty

No More
Loneliness

No More
Suicide

MCARE

O LOVE

R

E WARMNESS



Creating delicate original jewelries,
Just to make a brighter future.

Without you, there is no ME!

M.E. Program coordinator:

LYNN BLUMAS

Phone: 519-679-9570 ext. 25

Toll Free: 1-877-859-0352

Fax: 1-866-210-1917

Follow us:

Facebook: www.Facebook.com/mysistersplacelondon

Twitter: [@mysistersplace](https://twitter.com/mysistersplace)

Website: www.mysistersplacelondon.ca



Sale Info: Tu-Th
10-12am & 1-3pm
566 Dundas st

My Sisters' Place M.E. Micro Enterprise

We handmade and sell Original and Creative Jewelry

At *My Sisters' Place*, we help women at risk of homelessness, abuse, mental illness, under-employment, trauma and poverty.

We provide a place for women to create and sell original jewelry. Through our program, we teach women invaluable entrepreneurial skills.

How you can help us

To purchase M.E. Jewelry, visit:

My Sisters' Place

566 Dundas St.

Tuesday - Thursday

10am - 12pm and 1pm - 3pm

To book a table to sell M.E. Jewelry at your events, please contact:

Lynn Blumas, M.E. Program Coordinator

519-679-9570 ext. 25

l.blumas@wotch.on.ca



***Without you,
There's no ME!***



www.mysistersplacelondon.ca



www.facebook.com/mysistersplacelondon



[@mysistersplace](https://twitter.com/mysistersplace)

My Sister's Place!

Original and Creative Jewelry

Buy homemade jewelry
from Tuesdays to
Thursdays 10am - 12pm
and 1pm - 3pm
The jewelry is created by
women in risk of homelessness



"Without you, there is no ME!"
M.E. Micro Enterprise



Facebook: www.facebook.com/mysistersplacelondon
Twitter: @mysistersplace
Website: www.mysistersplacelondon.ca

Lynn Blumas, M.E. Program Coordinator
519-679-9570 ext. 25
l.blumas@wotch.on.ca
My Sisters' Place, 566 Dundas Street

purchase JEWELRY

"Without you, there is no M.E."



body
compassion
home
welcome
diversity
holistic
creative
original
respectful
safe
nurture
resilient
sharing
empathy
women
community
inclusive
helpful
Companionship
Homeless
M.E.

Find Us!!!

Tuesday-Thursday
10 a.m-12p.m &
1p.m-3p.m @

My Sister's Place

566 Dundas Street

Follow Us @



www.facebook.com/mysisterplacelondon



@mysisterplace



www.mysisterplace.com

You can book a table to sell M.E.products at our events or corporate meetings

Contact information:Lynn Blumas(M.E.program Coordinator)

Tel:519-679-9570 ext.251 blumas@watch.on.ca

Original and creative jewelry sale in support of

My Sister's Place

Beauty, learning, companionship, purpose, community.

Purchase jewelry made by women at risk of homelessness, in support of women at risk of homelessness.

*If you are interested in selling at or booking an M.E. products table, please contact:
Lynn Blumas, M.E. Program Coordinator,
for details at 519-679-9570 ext. 25 l.
blumas@wotch.on.ca*

Hours:

Tuesday-Thursday:

10am - 12pm and 1pm - 3pm

Location:

My Sisters' Place, 566 Dundas Street

Feel free to contact us via:

Facebook Page:

www.facebook.com/mysistersplacelondon

Twitter:

@mysistersplace

Website:

www.mysistersplacelondon.ca



Without you, there is no ME!



MSP

My Sisters' Place

My Sisters' Place

WITHOUT YOU THERE IS NO M.E.



SHOP AT
M.E.

Original and Creative Jewelry by the women of the
M.E. Program


Come and Shop For the Cause
At My Sisters' Place
566 Dundas Street
Tuesday-Thursday 10 am-12pm and 1pm-3pm



Creating jewelry...
improving lives

Through the Micro Enterprise program
women:

- Receive a chance to make something beautiful
- Learn how to operate a business
- Gain companionship
- Gain a sense of purpose

 @mysistersplace

 <http://www.facebook.com/mysistersplacelondon>

 www.mysistersplacelondon.ca

Planning an event or corporate meeting?

Book an M.E. table to sell our original jewelry
and fashion accessories

For details contact:

Lynn Blumas, M.E. Program Coordinator
519.679.9570 ext. 25
l.blumas@wotch.on.ca



My Sisters' Place

a safe, supportive community for women facing homelessness

My Sister's Place and Micro-Enterprise want YOU to help make a difference



"Without you, there is no ME!"

Original and Creative Jewelry



Made by women at risk of homelessness.

Buy something beautiful! Give them a sense of belonging!

Contact Information: www.facebook.com/mysistersplacelondon; @mysistersplace; www.mysistersplacelondon.ca

To Purchase: Tuesdays to Thursdays 10am - 12pm and 1pm - 3pm at My Sisters' Place, 566 Dundas Street

To book a table contact: Lynn Blumas, M.E. Program Coordinator, for details at 519-679-9570 ext. 25

My Sisters' Place

...make something beautiful

...gain companionship

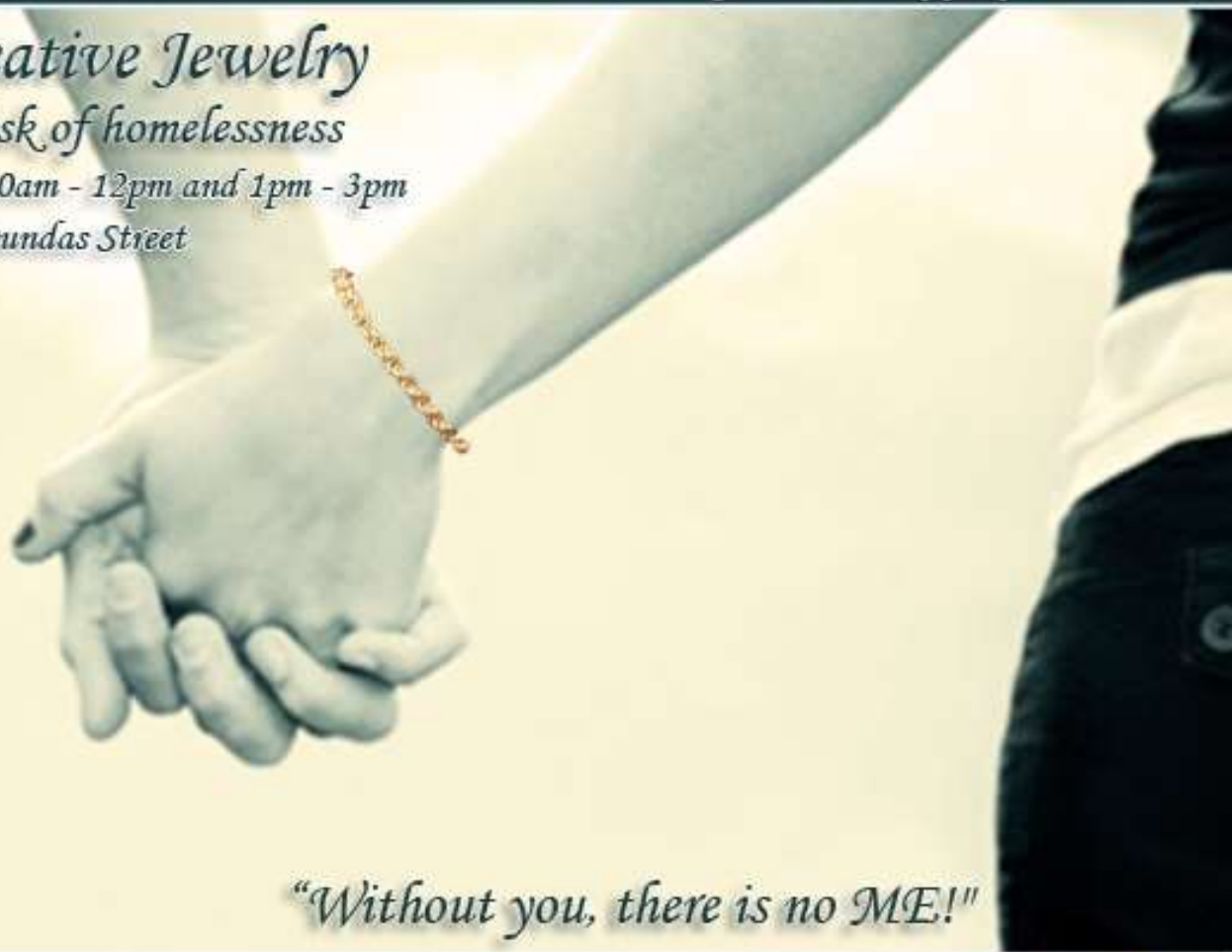
...gain a sense of purpose

Original and Creative Jewelry

Made by women at risk of homelessness

Tuesdays to Thursdays 10am - 12pm and 1pm - 3pm

My Sisters' Place, 566 Dundas Street



"Without you, there is no ME!"

@mysistersplace

www.mysistersplacelondon.ca

www.facebook.com/mysistersplacelondon



Book a table to sell M.E. products
at your events or corporate meetings!

Contact: Lynn Blumas, M.E. Program Coordinator

519-679-9570 ext. 25

l.blumas@wotch.on.ca





My Sisters' Place

M.E. Micro Enterprise

Original and Creative Jewelry:

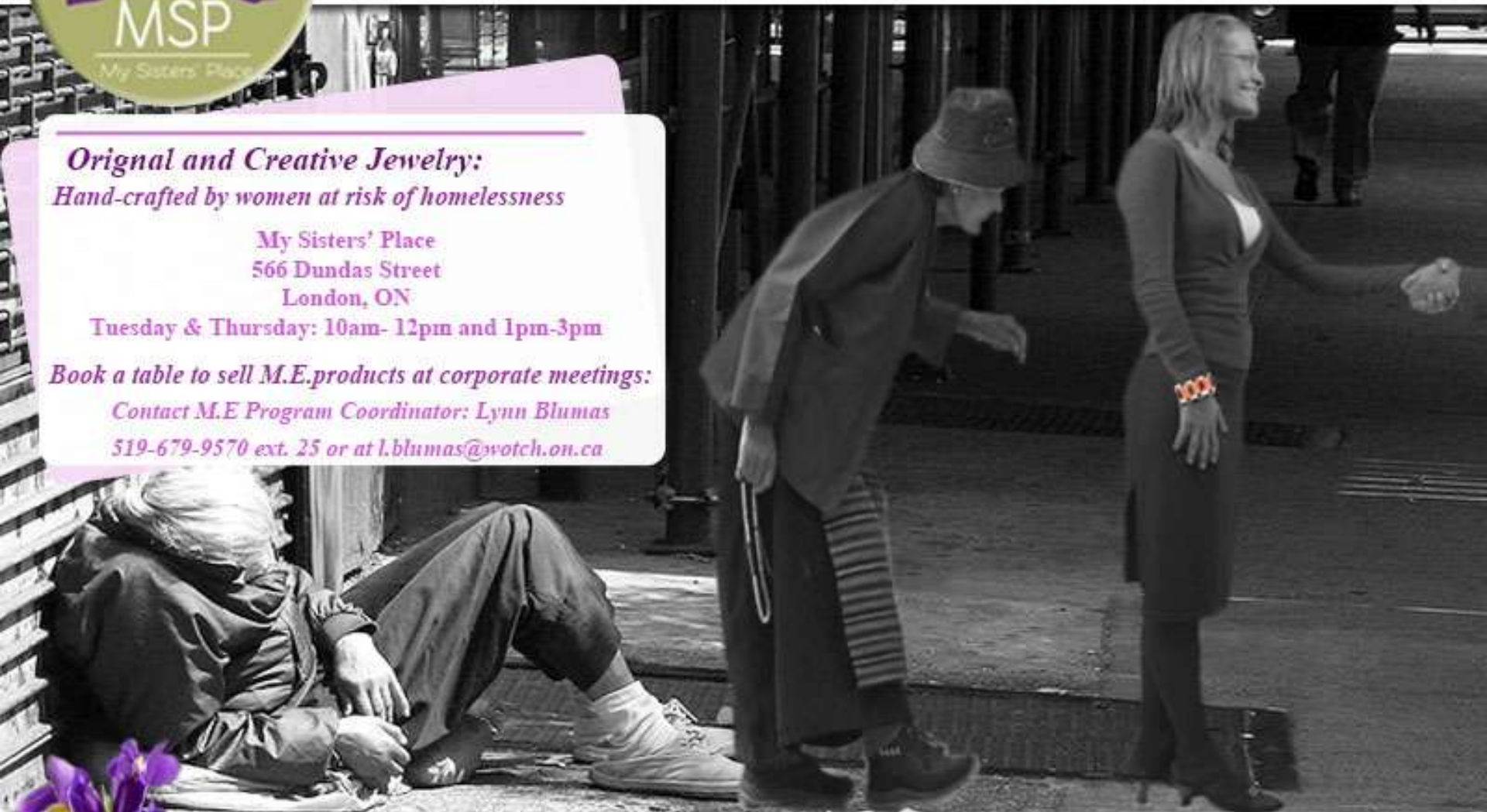
Hand-crafted by women at risk of homelessness

My Sisters' Place
566 Dundas Street
London, ON

Tuesday & Thursday: 10am- 12pm and 1pm-3pm

Book a table to sell M.E.products at corporate meetings:

Contact M.E Program Coordinator: Lynn Blumas
519-679-9570 ext. 25 or at l.blumas@wotch.on.ca



Visit us on:



Facebook Page: www.facebook.com/mysistersplacelondon

Twitter: [@mysistersplace](https://twitter.com/mysistersplace)

Website: www.mysistersplacelondon.ca

*Without you,
there is no ME!*



My Sisters' Place

Without you, there is
no ME!

Come And See Our Jewelry!

Tuesdays to Thursdays 10am - 12pm and 1pm -
3pm at My Sisters' Place, 566 Dundas Street

To book tables or for more information contact:
Lynn Blumas, M.E. Program Coordinator, for
details at 519-679-9570 ext. 25
l.blumas@wotch.on.ca

Simple Jewelry Made
By Simple Artisans

Support This Feeling
Facebook Page: www.facebook.com/mysistersplacelondon
Twitter: @mysistersplace
Website: www.mysistersplacelondon.ca



At "My Sisters' Place"

We Make the Beauty of a Helping Hand...



Even More Beautiful.

With the power of Micro-Enterprise:

A collective of women at risk of homelessness
who create unique and exquisite pieces of jewellery.

But remember, "Without you, there is no M.E.!"

So come and see our jewellery:

**Tuesday-Thursday 10am-12pm and 1pm-3pm
at My Sisters' Place, 566 Dundas Street**



Or book an M.E. sales table for your event! Contact Lynn Blumas,
M.E. Program Coordinator, at 519-679-9570 ext.25 - l.blumas@wotch.on.ca

Check us out!

Facebook: www.facebook.com/mysistersplace | Twitter: @mysistersplace |
Website: www.mysistersplacelondon.ca



My Sisters' Place

a safe, supportive community for women facing homelessness

ORIGINAL AND CREATIVE JEWELRY

M.E. - Micro Enterprising Jewelry

Created and designed by women facing poverty and homelessness



love

compassion

passion

independence

community

struggle

Without you, there is no ME!



art

empowerment

support

Tuesdays - Thursdays
10 am - 12 pm
1 pm - 3pm
at My Sisters' Place,
566 Dundas Street
London, ON

For more information or to book a table and sell M.E Jewelry at your next Corporate Meeting or Event,
Contact Lynn Blumas, M.E. Program Coordinator
519-679-9570 ext. 25
l.blumas@wotch.on.ca

Visit us at
www.facebook.com/mysistersplacelondon
[@mysistersplace](https://www.instagram.com/mysistersplace)
& www.mysistersplacelondon.ca




My Sisters' Place


"Without you, there is no ME!"




"... we are women giving back as artisans making original and creative jewelry. At the same time, we are gaining companionship and a sense of purpose. Most importantly, we get to give back to the community with our talents. "

Time: Tuesdays to Thursdays 10am - 12pm and 1pm - 3pm
Location: My Sisters' Place, 566 Dundas Street

 www.facebook/mysistersplacelondon

 [@mysistersplace](https://twitter.com/mysistersplace)

 www.mysistersplacelondon.ca

To book tables or for more information contact:
Lynn Blumas, M.E. Program Coordinator
519-679-9570 ext.25 l.blumas@watch.on.ca

Sell our beautiful jewellery at YOUR corporate events!

Please Contact:

Lynn Blumas - M.E. Program Coordinator

519-679-9570 ext. 25

l.blumas@wotch.on.ca

Operating Hours:

Tuesday and Thursday 10am to 12pm

and 1pm to 3pm

566 Dundas Street

@mysistersplace

<http://www.facebook.com/mysistersplacelondon>

www.mysistersplacelondon.ca



My Sisters Place

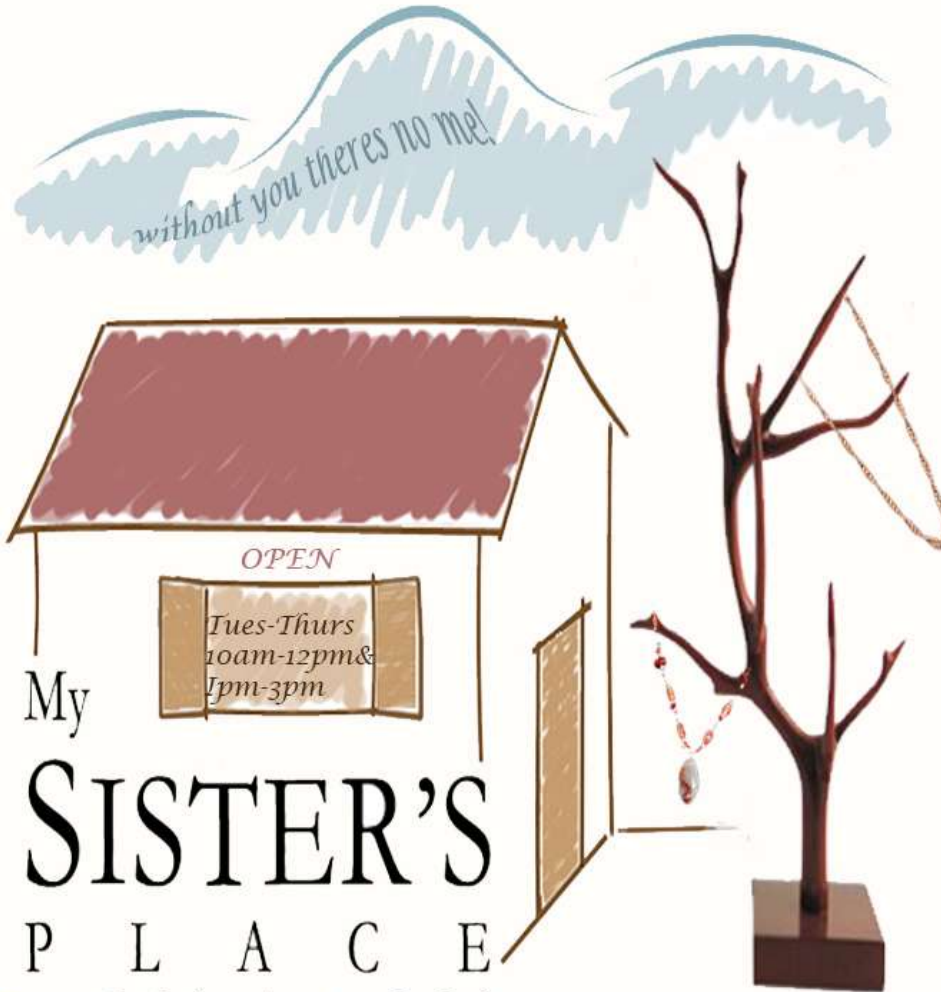
Without you, there is no ME!






Shelter our Sisters by Buying their Gems

Contact Lynn Blumas, M.E. Program Coordinator @ 519 679 9570 ext. 25
l.blumas@wotch.on.ca



 www.facebook.com/mysistersplacelondon

 [@mysistersplace](https://twitter.com/mysistersplace)

 www.mysistersplacelondon.ca

Micro Enterprise

*Creating Jewelry, Improving Lives
Without you, there is no M.E.*



Purchase Jewelry at My Sister's Place, 566 Dundas Street

Tues- Thurs: 10am-12pm, 1pm-3pm

Original and Creative Jewelry

M.E. supports women at risk of homelessness, by providing work experience and funds
The women at risk are the artisans creating the jewelry

Contact **Lynn Blumas**, Program Coordinator


to book a table for your events

(519) 679-9560 ext. 25

l.blumas@watch.on.ca



Support My Sister's Place:

 www.facebook.com/mysistersplacelondon

 [@mysistersplace](https://twitter.com/mysistersplace)

www.mysistersplacelondon.ca

M.E.

Without you, there is no M.E. !

Micro Enterprise

... Pretty jewelry, own design.

... Wonderful future, our effort.



FOLLOW US

Facebook: www.facebook.com/mysistersplacelondon

Twitter: @mysistersplace

Website: www.mysistersplacelondon.ca

Purchase M.E. jewelry!

Tuesdays to Thursdays

10am - 12pm & 1pm - 3pm

566 Dundas Street

London ON, N6B 1T5

Book a table now!

sell M.E. products at your event

Lynn Blumas

519-679-9570 ext. 25

l.blumas@watch.on.ca





My Sisters' Place

a safe, supportive community for women facing homelessness

The Micro-Enterprise (M.E.) is a collective of women who gather to create original jewelry and fashion accessories. The Micro Enterprise program empowers women to learn a full complement of skills that may lead to employment or entrepreneurial opportunities. Through each piece of jewelry or textile created, women achieve incredible success by learning basic principles of business, and marketing. Visit our website: www.mysistersplacelondon.ca



Support your local Sisters by purchasing this **Original and Creative Jewelry!**

Tuesdays to Thursdays

10am -12pm and 1pm - 3pm

at My Sisters' Place, 566 Dundas Street

Book your own M.E. tables at corporate meetings or other events by contacting:

Lynn Blumas, M.E. Program Coordinator

519-679-9570 ext.25 l.blumas@wotch.on.ca

Without you, there is no ME!



Like us on Facebook! www.facebook.com/mysistersplacelondon



Follow us on Twitter! @mysistersplace

M.E. Micro Enterprise

Without you, there is no M.E.!



*Creating jewelry
Improving lives*



Tuesdays-Thursdays
10am-12pm,
and 1pm-3pm

M.E. Program Coordinator :
Lynn Blumas

Following Us:

[facebook.com/mysistersplaelondon](https://www.facebook.com/mysistersplaelondon)

[@mysisterplace](https://www.instagram.com/mysisterplace)

Contrast:

E-mail: l.blumas@watch.on.ca

Phone: 519-679-9570 ext. 25

website: www.mysistersplacelondon.ca

Address:

Micro Enterprise (M.E.)

My Sisters' Place

566 Dundas Street

London, Ontario N6B 1T5



My Sisters' Place
a safe, supportive community for women facing homelessness

W
i
t
h
o
u
t

Y
O
U

t
h
e
r
e
s
n
o

M
.
E



MY SISTERS' PLACE



YOUR CHARITABLE CONTRIBUTIONS PROTECT OUR SAFE HAVEN



**M.E Micro Enterprise
Creating Jewelry,
Improving Lives**

**For More Information Contact:
Lynn Blumas, M.E. Program
Coordinator:
519-679-9570 ext. 25
l.blumas@wotch.on.ca**

**To make a contribution visit us at:
My Sisters' Place, 356 Dundas Street
Tuesdays to Thursdays 10am - 12pm
and 1pm - 3pm**



www.facebook.com/mysistersplacelondon

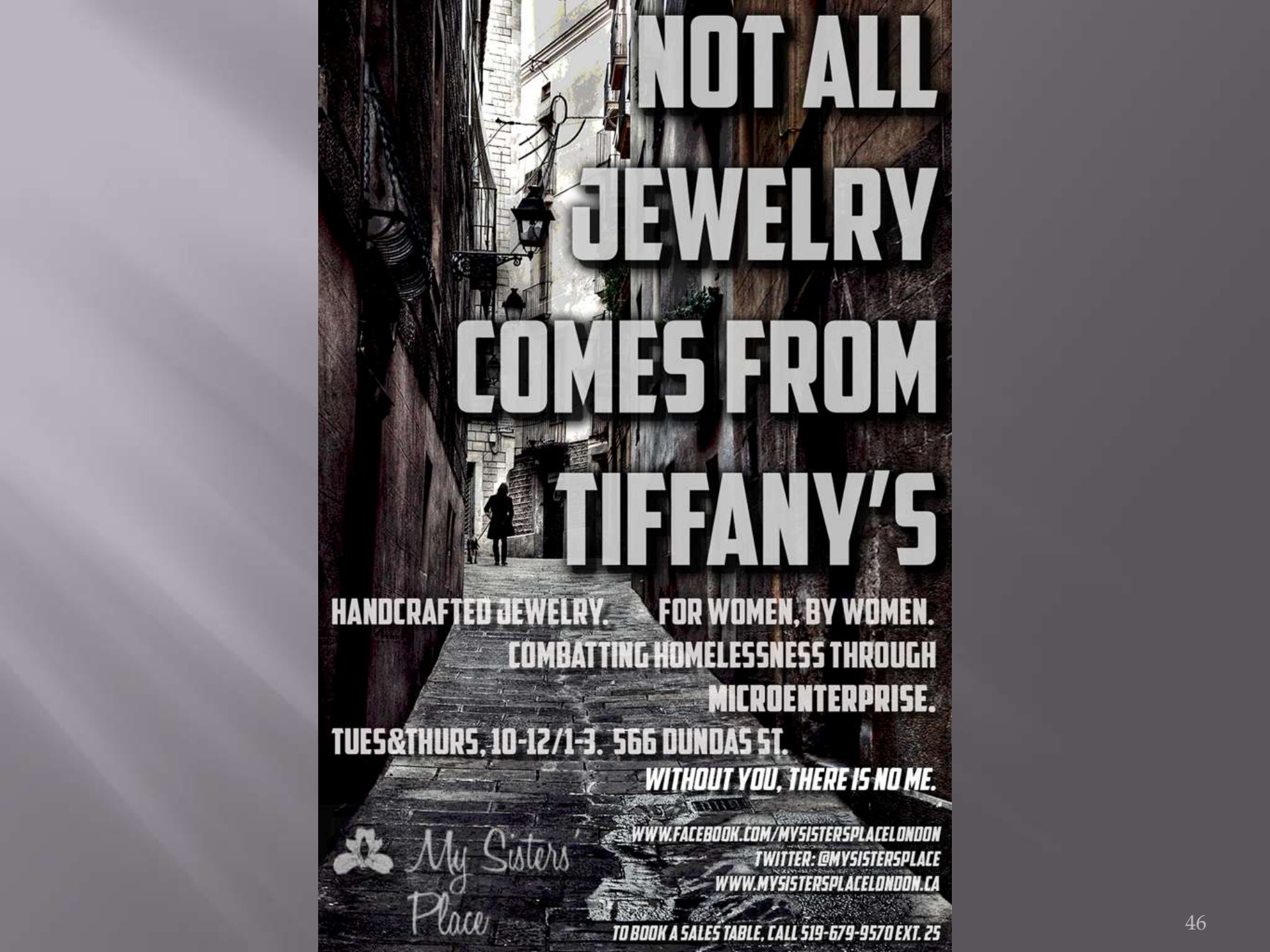


[@mysistersplace](https://twitter.com/mysistersplace)



www.mysistersplacelondon.ca





NOT ALL JEWELRY COMES FROM TIFFANY'S

**HANDCRAFTED JEWELRY. FOR WOMEN, BY WOMEN.
COMBATting HOMELESSNESS THROUGH
MICROENTERPRISE.**

TUES&THURS, 10-12/1-3. 566 DUNDAS ST.

WITHOUT YOU, THERE IS NO ME.



*My Sisters
Place*

WWW.FACEBOOK.COM/MYSISTERSPLACELONDON

[TWITTER: @MYSISTERSPLACE](https://twitter.com/MYSISTERSPLACE)

WWW.MYSISTERSPLACELONDON.CA

TO BOOK A SALES TABLE, CALL 519-679-9570 EXT. 25



BUY BEAUTIFUL JEWELLERY, SUPPORT WOMEN IN CRISIS

W
i
t
h
o
u
t
y
o
u
t
h
e
r
e
i
s
n
o
m
e
!!

*Help give at-risk women in your community a
feeling of purpose and worth.!*

Hours of operation:

*Tu-Thurs. 10Am-12pm and 1PM-3PM
at my sister's place, 556 Dundas St.*

Interested in selling MSP jewellery?

*Contact Lynne Blumas
program co-ordinator
519-679-9570 ex. 25
l.blumas.wotch.on.ca*

CONTACT:
TWITTER: @MYSISTERSPLACE
FACEBOOK:
WWW.FACEBOOK.COM/MYSISTERSPLACELONDON
WEB SITE: MY SISTERS PLACE LONDON.COM





My Sisters' Place

~ Without you, there is no ME! ~

Original and Creative Jewelry!

Women at risk of homelessness are the artists creating this beautiful jewelry



*Come Visit Us!
Tuesdays - Thursdays
10am - 12pm, 1pm - 3pm*

*My Sisters' Place
566 Dundas Street
London, ON N6B 1W8*

To book a table to sell M.E. Products at an event or corporate meeting, contact:

*M.E. Program Co-ordinator
Lynn Blumas:
519-679-9570 ext. 25 or
l.blumas@wotch.on.ca*



Follow Us!



www.facebook.com/mysistersplacelondon
[@mysistersplace](https://twitter.com/mysistersplace)
www.mysistersplacelondon.ca



Micro Enterprise

Without **YOU**,
There is no **ME!**



Tuesdays to Thursdays
10am-12pm & 1pm-3pm
566 Dundas Street

My Sister's Place

Creating Jewellery, Improving Lives



To book a table to sell MSP jewellery at an event contact Lynn Blumas,
M.E. Program Coordinator for details at 519-679-9570 ext. 25
l.blumas@wotch.on.ca



facebook.com/mysistersplacelondon
[@mysistersplace](https://twitter.com/mysistersplace)
mysistersplacelondon.ca



My Sisters' Place

a safe, supportive community for women facing homelessness

MICRO-ENTERPRISE (M.E.)

"Without you, there is no ME!"

Original and Creative Jewelry made
by women at risk of homelessness

M.E. products are available to sell at events!

Purchase Jewelry at Our Store!


My Sister's Place,
566 Dundas Street
London, ON


Hours: Tues - Thurs
10am-12pm
1pm - 3pm

To book a table or for more information:

Lynn Blumas
M.E. Program Coordinator
519-679-9570 ext. 25
l.blumas@wotch.on.ca



 @mysistersplace

 Website: www.mysistersplacelondon.ca
www.facebook.com/mysistersplacelondon

THESE
HANDS
CAN DO
MORE
THAN
JUST
BEG

My Sister's Place

Without you, there is no ME!

Support homeless women by buying original artisan jewelry they made themselves

Times to purchase

Tuesdays to Thursdays 10am - 12pm and
1pm - 3pm at My Sisters' Place, 566
Dundas Street

You can also book a table to sell M.E. products at events or corporate meetings. To book tables or for more information contact: Lynn Blumas, M.E. Program Coordinator, for details at 519-679-9570 ext. 25 l.blumas@watch.on.ca

Contact

Facebook: www.facebook.com/mysistersplacelondon

Twitter: @mysistersplace

Website: www.mysistersplacelondon.ca



Empowering women facing homelessness

My Sisters' Place



M.E. Micro Enterprise

“Without you, there is no ME!”

Purchase Handmade M.E. Jewelry

WHEN:

Tues-Thurs 10 am-12 pm and 1pm-3 pm

WHERE:

My Sisters' Place, 566 Dundas Street



Show your support by selling M.E. jewelry at your events

CONTACT:

Lynn Blumas
M.E. Program Coordinator

519-679-9570 ext. 25
l.blumas@watch.on.ca

 /mysistersplacelondon

 @mysistersplace

 mysistersplacelondon.ca

My Sisters' Place

Without you

There is no M.E.



Original & Creative Jewelry

Tuesdays - Thursdays

10am - 12pm & 5pm - 9pm

566 Dundas Street London

Contact: M.E. Program Coordinator

Lynn Blumas: 519-679-9570 ext. 25

Micro Enterprise (M.E.)

My Sisters' Place

Facebook: www.facebook.com/mysisterslonson

Twitter: [@mysistersplace](https://twitter.com/mysistersplace)

Website: www.mysistersplacelondon.ca

Micro - Enterprise needs your support!



M.E is designed to help homeless women in the community.
we sell **Original and Creative jewelry** made by the women in
the program.



by supporting M.E you help a woman

- ♥ learn how to operate a business
- ♥ gain companionship
- ♥ gain a sense of purpose
- ♥ get to give back to the community.

For More Informations or Reservations
Contact Lynn Blumas, M.E Program coordinator
Tel: 519-679-9570 ext. 25
email: l.blumas@wotch.on.ca

Time and location

Tuesday - Thursday
10:00am - 12:00pm and 1:00pm - 3:00pm
My Sister's Place 566 Dundas St London ON N6B 1W8

Contact info:



@mysistersplace



www.Facebook.com/mysistersplacelondon



www.mysistersplacelondon.ca



My Sister's Place of London



MSP

My Sister's Place

My Sister's Place M.E. Micro Enterprise



MSP

My Sister's Place

Contact Information



@mysistersplace



facebook.com/mysistersplacelondon



mysistersplacelondon.ca



All jewelry and accessories hand crafted
by at-risk females. Proceeds benefit females
facing poverty.

On sale
Tuesday-Thursday:
10:00am-12:00pm and 1:00pm-3:00pm
566 Dundas Street

Without you, there is no ME!

WANT TO SELL M.E PRODUCTS AT YOUR EVENT OR FUNCTION?

To book tables or for more information contact: Lynn Blumas, M.E. Program Coordinator for details at
519-679-9570 ext. 25 l.blumas@wotch.on.ca



M.E is an initiative helping women facing homelessness, abuse, and poverty. These women get together to make beautiful pieces of recyclable jewelry which are then sold to the public. Profits support the individual artisans as well as the program.

My Sister's Place

M.E Micro Enterprises



WITHOUT YOU,
THERE IS NO ME!

Come check it out Tues-Thurs
10am-12pm and 1pm-3pm at My
Sisters' Place, 566 Dundas Street

Book a table for your M.E event!
Contact Lynn Blumas, Program
Coordinator, at 519-679-9570 ext
25 or l.blumas@wofch.on.ca

Twitter: @mysistersplace

www.mysistersplacelondon.ca

Facebook: www.facebook.com/mysistersplacelondon

MY SISTERS' PLACE

*Homeless artisans
made*

JEWELRY
SALE

*Original, Creative
Jewelry*



*Without you,
there is no ME!*

Contact us: (To book a table:Lynn Blumas, M.E. Program Coordinator, for details at 519-679-9570 ext. 25 l.blumas@wotch.on.ca)

Facebook Page: www.facebook.com/mysistersplacelondon

Twitter: @mysistersplace

Website: www.mysistersplacelondon.ca

*Tuesdays to Thursdays 10am - 12pm
and 1pm - 3pm at My Sisters' Place,
566 Dundas Street*

MY SISTERS' PLACE

M.E. MICRO ENTERPRISE

Without you,
there is no M.E.!

At risk women creating
Original & Creative Jewelry

PURCHASE TIMES

Tues - THURS
10AM - 12 PM
1PM - 3PM
566 Dundas Street

EVENT BOOKINGS

To Book A Table Contact:
Lynn Blumas
519-679-9570 ext. 25
l.blumas@wotch.on.ca



@mysistersplace



facebook.com/mysistersplacelondon

www.mysistersplacelondon.ca



Micro Enterprising



Women helping women

start their own business

The Micro-Enterprise (M.E.) is a collective of women who gather to create original jewelry and fashion accessories. The Micro Enterprise program empowers women to learn a full complement of skills that may lead to employment or entrepreneurial opportunities.

"Without you there is no M.E."

Please visit us!



www.facebook.com/mysistersplacelondon



[@mysistersplace](https://twitter.com/mysistersplace)

Shop: Tuesdays-Thursdays 10am-12pm & 1pm-3pm, 566 Dundas Street

Have us at your event: 519-679-9570 ext. 25 | blumas@watch.on.ca



Without **you**, there is no **M.E.!**



My Sisters' Place
a safe, supportive community for women facing homelessness

Original & Creative Jewelry
Hand-crafted by Women at Risk



Tuesdays to Thursdays 10am - 12pm & 1pm - 3pm
My Sisters' Place, 566 Dundas Street

Contact Us!



www.facebook.com/mysistersplacelondon



[@mysistersplace](https://twitter.com/mysistersplace)



www.mysistersplacelondon.ca

To sell M.E. products at your next event, contact:

Lynn Blumas, M.E. Program Coordinator
519-679-9570 ext. 25
l.blumas@wotch.on.ca

My Sister's Place

"Without you, there is no ME!"

Original and Creative Jewelry

created by a community of women facing homelessness



All are welcome to purchase from

10am-12pm & 1pm-3pm
on
Tuesdays to Thursdays

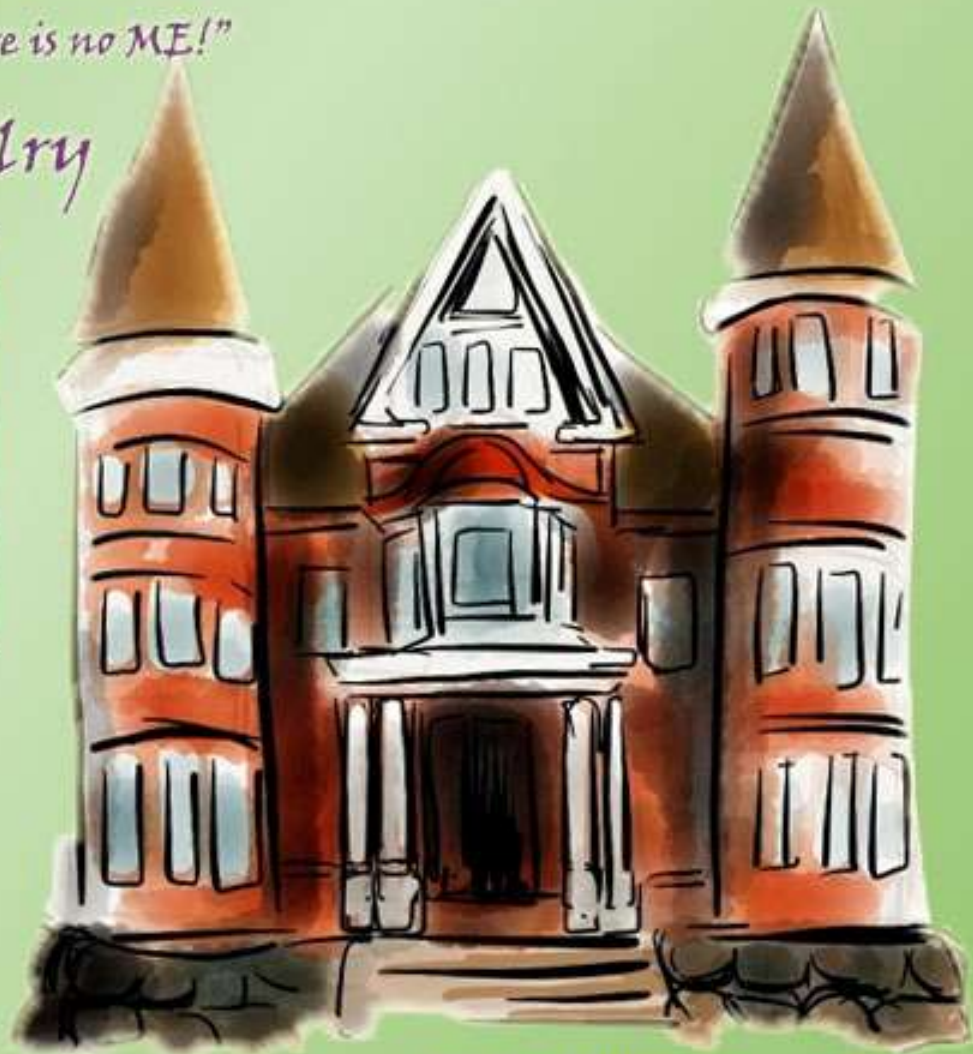


TABLE BOOKINGS FOR EVENTS TO
SELL M.E. PRODUCTS AVAILABLE
CONTACT LYNN BLUMAS
M.E. PROGRAM COORDINATOR
(519) 679-9570 EXT. 25
L.BLUMAS@WATCH.ON.CA

Facebook: www.facebook.com/mysistersplacelondon
Twitter: @mysistersplace
www.mysistersplacelondon.ca

M.E. MICRO ENTERPRISE
566 Dundas Street
London, ON





My Sisters' Place

M. E. Micro Enterprise



My Sisters' Place is a safe, supportive community for women facing or at risk of homelessness. Our programs address the underlying issues of mental illness, addiction, street involvement, abuse, trauma, health, poverty and hunger. At My Sisters' Place, we believe in women's resilience and welcome ..all women with dignity and respect.

The Micro-Enterprise is a collective of women who gather to create original jewelry and fashion accessories.





M. E. jewelry :
Tuesday to Thursdays
10am-12pm
1pm-3pm
,at My Sisters' Place
566 Dundas Street



Without you, there is no ME !

Contact Information:

 www.mysistersplacclondon.ca

 www.facebook.com/mysistersplacelondon

 [@mysistersplace](https://twitter.com/mysistersplace)

*Book a table to sell M.E. products at your events or meetings.
for more information please contact Lynn Blumas, M.E. Program Coordinator
519-679-9570 ext. 251 blumas@wotch.on.ca*



My Sisters' Place

a safe, supportive community for women facing homelessness



**BUY
Original
Creative
Jewelry
M.E. MADE**

The Micro-Enterprise

**Tuesday to Thursday
10am-12pm and 1pm-3pm
At My Sisters' Place, 566 Dundas St.**

To book selling tables or for more info
Contact Lynn Blumas, M.E. Program Coordinator
l.blumas@wotch.on.ca or 519 679 9570 ext. 25

Support Us

"Without YOU, there is no ME!"



www.mysistersplacelondon.ca



[/mysistersplacelondon](https://www.facebook.com/mysistersplacelondon)



[@mysistersplace](https://twitter.com/mysistersplace)



My Sisters' Place

a safe, supportive community for women facing homelessness

Micro-Enterprise
Selling Original Jewelry Handcrafted By
The Women In This Empowering Program


To Purchase M.E. Jewelry,
Visit Us!


Tuesday - Thursday
10 a.m. - 12 p.m. and
1 p.m. - 3 p.m.

My Sisters' Place
566 Dundas Street,
London, ON

Without you, there is no ME!

Follow Us!

 Facebook: www.facebook.com/mysistersplacelondon

 Twitter: @mysistersplace

Or find us online @ www.mysisterplacelondon.ca

To book tables or for more information contact
Lynn Blumas, M.E. Program Coordinator
for details at: 519-679-9570 ext. 25
l.blumas@wotch.on.ca

*Original and creative Jewelry,
carefully handcrafted
by the hardworking
woman of My Sisters' Place*



ME Jewelry can be purchased:
Tuesdays to Thursdays
10am - 12pm and 1pm - 3pm
at My Sisters' Place,
566 Dundas Street

"Without you, there is no ME!"



ME products can be sold at events or
corporate events by booking a table! To
book tables or for more information contact:
Lynn Blumas, M.E. Program Coordinator,
for details at 519-679-9570 ext. 25
l.blumas@wotch.on.ca

Facebook Page: www.facebook.com/mysistersplacelondon

Twitter: @mysistersplace

Website: www.mysistersplacelondon.ca



Original & Creative Jewelry

"without you there is no me!"

Tuesdays to Thursdays 10am - 12pm and 1pm - 3pm
at My Sisters' Place, 566 Dundas Street London, ON



created by women at risk of homelessness

Want to sell Micro Enterprised products at your next
corporate meeting or social event?

Contact: Lynn Blumas, M.E. Program Coordinator, for details at
519-679-9570 ext. 25 l.blumas@watch.on.ca

Follow us!

www.facebook.com/mysistersplacelondon
[@mysistersplace](https://www.instagram.com/mysistersplace)
www.mysistersplacelondon.ca



MY SISTER'S PLACE PRESENTS: MICRO ENTERPRISE

HAND-CRAFTED JEWELRY

Without you there is no ME

JEWELRY CREATED BY WOMEN IN RISK OF HOMELESSNESS

Available for purchase on Tuesdays to
Thursdays 10am - 12pm and 1pm - 3pm
My Sisters' Place, 566 Dundas Street

Twitter: @mysistersplace

Website: www.mysistersplacelondon.ca

Facebook: www.facebook.com/mysistersplacelondon

Help us out! Book tables to help us sell our M.E
products at your events! To book a table or for more
information contact: Lynn Blumas, M.E. Program Coordinator,
for details at 519-679-9570 ext. 25 l.blumas@wotch.on.ca





MY SISTER'S PLACE



Without You, There is no M.E.!

Original and Creative Jewelry
Made by At-Risk Women

Micro Enterprising Women

- Gain companionship
- Ample business opportunities
- Make something beautiful

Check us out at:

www.facebook.com/mysistersplacelondon

www.mysistersplacelondon.ca

Follow us on twitter:

@mysisters place

Book tables at your
Next corporate
Event or meeting
To sell ME products

Contact Information:

Lynn Blumas, ME Program Coordinator

519-675-9570 ext. 25

l.blumas@watch.on.ca

Hours of Operation:

Tuesday-Thursday

10-12 & 1-3

My Sisters' Place, 566 Dundas Street

My Sister's Place

M.E. Micro Enterprise

Without
you,
there
is no
M.E.!

"Art allows people a way to dream their way out of their struggle."

- Russell Simmons

Come see our creative and original jewellery - buy a piece of this unique art and support women facing or at risk of homelessness.

To book a table to sell M.E. products at your events or corporate meetings contact **Lynn Blumas**,
M.E. Program Coordinator,
519-679-9570 ext. 25
l.blumas@wotch.on.ca

You can buy jewellery
Tuesdays to Thursdays
10am - 12pm and 1pm - 3pm
My Sisters' Place,
566 Dundas Street

Like us on Facebook!
[facebook.com/mysistersplacelondon](https://www.facebook.com/mysistersplacelondon)
Twitter: @mysistersplace
Or find out more on our website:
www.mysistersplacelondon.ca





Micro-Enterprise's 
original and creative jewelry
made by women at risk of homelessness
without you theres no me

**Interested in selling M.E
products at meetings and
events?**

Book a table today!

Contact Lynn Blumas, program coordinator
519-679-9570 ex.25
l.blumas@wotch.on.ca




Help Support Our M.E Team

@ 566 Dundas St.

Tuesdays - 10AM to 12PM & Thursdays - 1PM to 3PM

 www.facebook.com/mysistersplacelondon

 @mysistersplace

 www.mysistersplacelondon.ca



My Sisters' Place

*a safe supportive community for women
facing homelessness*

Micro- Enterprise (M.E.)

566 Dundas Street

Tuesdays - Thursdays

10am - 12 pm

and

1pm - 3 pm



Interested in products?

Contact: Lynn Blumas

(M.E. Program Coordinator)

phone: (519)679-9570 ext. 25

email: l.bulmas@wotch.on.ca

www.facebook.com/mysistersplace

www.mysistersplacelondon.ca

Twitter: @mysistersplace

Without you, There is no ME!



My Sisters' Place

Helping women at risk of homelessness
through creative outlets

Original and Creative Jewelry

Tuesdays to Thursdays 10am - 12pm
and 1pm - 3pm at My Sisters' Place,
566 Dundas Street

To book tables or for more information contact:
Lynn Blumas, M.E. Program Coordinator, for
details at 519-679-9570 ext. 25
l.blumas@wotch.on.c

Contact Us



@Mysistersplace



mysistersplace@gmail.com



facebook.com/mysistersplacelondon

*“Without you, there is no
M.E.”*

Original and Creative Jewelry!

These women, at risk of homelessness, are creating jewelry to help themselves get back on track! Assist them in their endeavour! To purchase their hand-made jewelry, come Tuesdays to Thursdays, 10 A.M. - 12 P.M., and 1 P.M. - 3 P.M. at our location on 566 Dundas Street.



"Without you, there is no ME!"



My Sisters' Place

Contact Us:

www.facebook.com/mysistersplacelondon

Twitter: @mysistersplace

www.mysistersplacelondon.ca

To book a table to sell M.E. products at your event, contact Lynn Blumas, M.E. Program Coordinator, at 419-679-9570, ext. 25., or l.blumas@watch.on.ca



Without *you,* there is no *M.E.!*

Tuesdays to Thursdays 10am - 12pm and 1pm - 3pm
at My Sisters' Place, 566 Dundas Street

To book tables or for more information contact:
Lynn Blumas, M.E. Program Coordinator, for details @ 519-679-9570 ext. 25
@ l.blumas@wotch.on.ca



HOPE

Micro- Enterprise Jewelry & Accessory Sale

My Sister's Place is a Safe Haven for women facing homeless. Micro enterprise is an empowering group that helps these women in risk of homelessness create original and creative jewelry and accessory, that is sold at My Sisters' Place and at local events.

Sale takes place at
My Sisters' Place, 566 Dundas Street
Every Tuesday to Thursday
from 10am - 12pm and 1pm - 3pm

To book a table to sell M.E. products at our events or corporate meetings.
Contact Lynn Blumas,
M.E. Program Coordinator,
for details at 519-679-9570 ext. 25
l.blumas@wotch.on.ca



www.mysistersplacelondon.ca



@mysistersplace



www.facebook.com/mysistersplacelondon

Without you, there is no ME!



Without You, There Is NO ME!

COME CHECK US OUT

★
★
★
★ **to purchase hand made original and creative jewelry made by local artisans. All purchases go to support these artisan women at risk of homelessness.**

My Sisters' Place

566 Dundas St London, ON N6B 1W8
Tuesdays-Thursdays 10AM -12PM & 1PM-3pm



Tables available to sell M.E products for booking contact:
Lynn Blumas, M.E. Program Coordinator
519-679-9570 ext.25 • lblumas@watch.on.ca

 www.facebook.com/mysistersplacelondon
 [@mysistersplace](https://twitter.com/mysistersplace)
Website: www.mysistersplacelondon.ca

MY SISTERS' PLACE

Micro-Enterprise



Supporting the artistic efforts of
at risk homeless women


To book a table or for more
information contact:

Lynn Blumas,
M.E. Program Coordinator,
for details at 519-679-9570 ext. 25
l.blumas@wotch.on.ca

Facebook: www.facebook.com/mysistersplacelondon
Twitter: @mysistersplace
Website: www.mysistersplacelondon.ca

Original and Creative Jewelry sale :
Tuesdays to Thursdays 10am -12pm
and 1pm - 3pm at My Sisters' Place,
566 Dundas Street
All proceeds go to My Sisters' Place

Without you there is no M.E.





My Sisters' Place

M.E. Micro Enterprise

HELP

women at risk of homelessness...

Original and Creative Jewelry

"Without you, there is no M.E."

Purchase M.E. jewelry
Tuesdays to Thursdays
10am – 12pm and 1pm – 3pm
at My Sisters' Place
566 Dundas Street

To book tables to sell M.E.
products at an event or
for more information contact:
Lynn Blumas,
M.E. Program Coordinator
at 519-679-9570 ext. 25
l.blumas@wotch.on.ca



www.facebook.com/mysistersplacelondon



[@mysistersplace](https://twitter.com/mysistersplace)

Web: www.mysistersplacelondon.ca



My Sisters' Place

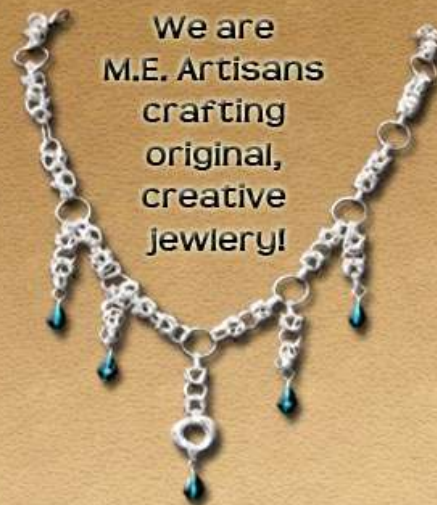
a safe supportive community
for women facing homelessness



*Without you,
there is no ME!*

Through the M.E. program women gain:

- ♥ Business skills
- ♥ Financial independence
- ♥ A sense of purpose
- ♥ Companionship
- ♥ Community participation



We are
M.E. Artisans
crafting
original,
creative
jewelry!

Available:
Tuesdays - Thursdays
10am - 12 pm &
1pm - 3pm
My Sister's Place
566 Dundas Street



[www.facebook.com/
mysistersplacelondon](https://www.facebook.com/mysistersplacelondon)



[@mysistersplace](https://twitter.com/mysistersplace)

www.mysistersplacelondon.ca

Interested in a M.E. table?

Please contact Lynn Blumas
M.E. Program Coordinator
Phone: 519-679-9570 ext. 25
email: l.blumas@wotch.on.ca



Creative and Original Jewellery by Micro Enterprise

M.E. designs produced by at-risk women
• empowerment • entrepreneurship •

Without you, there is no M.E.

Book an M.E. table for your event:

Lynn Blumas, Program Coordinator
519-679-9570 ext. 25
l.blumas@wotch.on.ca

Purchase M.E. Jewellery:

10am - 12pm, and 1pm-3pm
Tuesday through Thursday
My Sisters' Place - 566 Dundas St.



[mysistersplacelondon](https://www.facebook.com/mysistersplacelondon)



[@mysistersplace](https://twitter.com/mysistersplace)

[mysistersplacelondon.ca](https://www.mysistersplacelondon.ca)

EVEN THE STREETS CAN BE GLAMOROUS.

MICROENTERPRISE.

**ATTACKING
HOMELESSNESS
THROUGH HANDCRAFTED
JEWELRY. EMPOWERING
THROUGH HOPE.**

TUES/THURS, 10-12PM/1-3PM



**MY SISTERS' PLACE
566 DUNDAS ST.**

WWW.MYSISTERSPLACELONDON.CA

"WITHOUT YOU, THERE IS NO ME"

FACEBOOK.COM/MYSISTERSPLACELONDON

TWITTER: @MYSISTERSPLACE

TO BOOK A SALES TABLE, PLEASE CALL 919-679-9570 EXT. 25





My Sisters' Place

a safe, supportive community for women facing homelessness

Without you, there is no ME!

Purchase M.E. jewelry from women at risk of homelessness:

Tuesdays - Thursdays: 10:00-12:00 and 1:00-3:00

My Sisters' Place,

556 Dundas Street

www.mysistersplacelondon.ca

*Tables can be booked to sell M.E. products at events and corporate meetings.
To book a table, contact: Lynn Blumas 519-679-9570 ext. 25 or l.blumas@wvotch.on.ca



[/mysistersplacelondon](https://www.facebook.com/mysistersplacelondon)



[@mysistersplace](https://twitter.com/mysistersplace)



My Sisters' Place!
Without you, there is no ME!



www.facebook.com/mysistersplacelondon



@mysistersplace

Website: www.mysistersplacelondon.ca

M.E. Micro-Enterprise Hosts: **Original and Creative Jewelry**



Purchase the jewelry:
Tuesdays to Thursdays
Between 10am - 12pm & 1pm - 3pm
My Sister's Place
566 Dundas Street

Made by homeless women!

To book tables or for more info contact:
Lynn Blumas,
M.E. Program Coordinator
Phone: 519-679-9570 ext. 25
Email: l.blumas@watch.on.ca

My Sisters' Place

M.E. Micro Enterprise

"Without YOU,
There is no M.E.!"

Women facing the possibility of homelessness
creating unique jewellery

Purchase Jewellery at My Sisters' Place
566 Dundas Street
Tuesdays to Thursdays: 10am-12pm and 1pm-3pm



Facebook [/mysistersplacelondon](#)

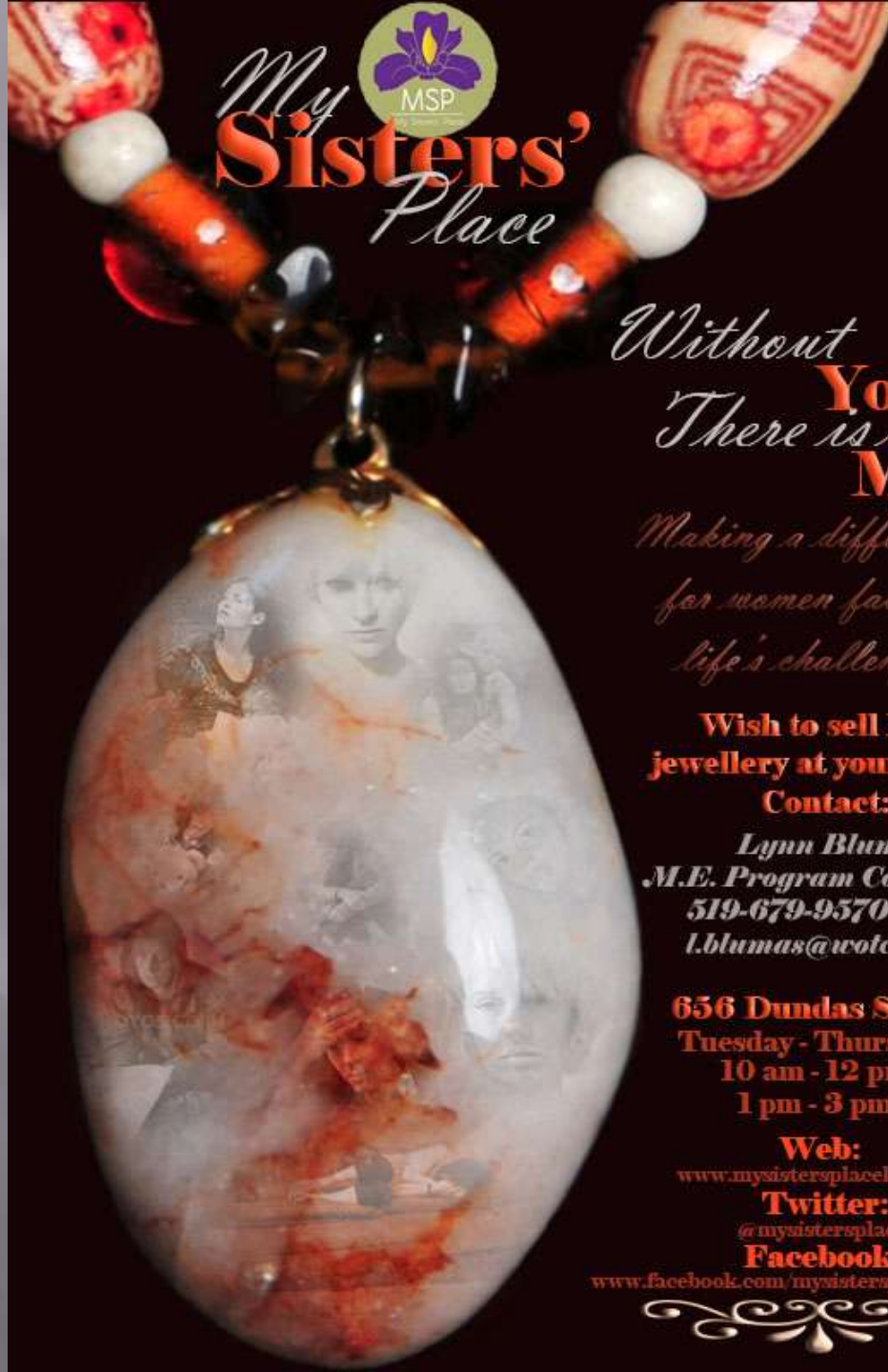
Twitter [@mysistersplace](#)

Website: www.mysistersplacelondon.ca

Book a Table to Sell M.E. Products:
Contact Lynn Blumas (M.E. Coordinator)

(519) 679-9570 ext. 25

lblumas@wotch.on.ca




My
Sisters'
Place

Without
You
There is no
M.E.

*Making a difference
for women facing
life's challenges*

**Wish to sell M.E.
jewellery at your event?**

Contact:

*Lynn Blumas,
M.E. Program Coordinator
519-679-9570 ext. 25
l.blumas@wotch.on.ca*

656 Dundas Street
Tuesday - Thursday
10 am - 12 pm
1 pm - 3 pm

Web:

www.mysistersplacelondon.ca

Twitter:

[@mysistersplace](https://twitter.com/mysistersplace)

Facebook:

www.facebook.com/mysistersplacelondon





My Sisters' Place

operates a program called
Micro-Enterprise (M.E.) which
exhibits the original and imaginative
work of women at risk of homelessness.
Through M.E. women gain the independence
and confidence to run a business and
create lovely jewelry.

A table can be booked to sell M.E. products at events or corporate meetings. Contact Lynn Blumas, M.E. Program Coordinator, for details at (519)679-9570 ext. 25 or l.blumas@watch.on.ca. Individual purchases can be made Tuesday to Thursday, 10am - 12pm and 1pm - 3pm

Without you, there is no ME!

Facebook Page: www.facebook.com/mysistersplacelondon

Twitter: [@mysistersplace](https://twitter.com/mysistersplace)

Webiste: www.mysistersplacelondon.ca



ME, Micro-Enterprise

Tuesdays to
Thursdays
10am - 12pm
& 1pm - 3pm
at
My Sisters' Place
566 Dundas
Street

Original and Creative Jewelry sold
at My Sisters' Place to help homeless
women!

Made by
M.E. artisans
who are
homeless!



You also can book a
table to sell M.E. prod-
ucts at our events or
corporate meetings. To
book tables or for more
information contact: Lynn
Blumas, M.E. Program
Coordinator, for details at
519-679-9570 ext. 25

Without you,
there is no
ME!



- Facebook Page: www.facebook.com/mysistersplacelondon
- Twitter: [@mysistersplace](https://twitter.com/mysistersplace)
- Website: www.mysistersplacelondon.ca



Without you, there is no ME!

My Sister's Place

Original and Creative Jewelry

Hours: Tuesdays to Thursdays,
10am-12pm and 1pm-3pm
566 Dundas Street

To sell M.E. products at your corporate events
or meetings, book a table or contact us for
more info: Lynn Blumas, M.E.
program coordinator, 519-679-9570 ex. 25
or blumas@watch.on.ca



j
e
w
e
l
l
e
r
y
e
m
p
o
w
e
r
i
n
g
w
o
m
e
n



www.mysistersplacelondon.ca



@mysistersplace



mysistersplacelondon

My Sister's Place



Where working together creates
jewelry and eliminates homelessness



Facebook Page: www.facebook.com/mysistersplacelondon

Twitter: [@mysistersplace](https://twitter.com/mysistersplace)

Website: www.mysistersplacelondon.ca

Without you, there is no ME!



To book tables or for more information contact:

Lynn Blumas, M.E. Program Coordinator - 519-679-9570 ext. 25 | l.blumas@wotch.on.ca

Open Hours: Tuesdays to Thursdays 10am - 12pm and 1pm - 3pm at My Sisters' Place, 566 Dundas Street

MY

Without you, there is no ME.

SISTERS,

PLACE



BOOK TABLES

CONTACT

Lynn Blumas

MC Program Coordinator

519-679-9570 ext. 25

lblumas@watchonca

www.mysistersplacelondon.ca

www.facebook.com/mysistersplacelondon

@mysistersplace

CREATING
JEWELRY.
IMPROVING
LIVES.

*Tuesdays to Thursdays
10:00 - 12:00 & 13:00 - 15:00*

566 Dundas Street

Original and Creative Jewelry

by M.E.

Time: 10am-12pm & 1pm-3pm

Tuesday to Thursday

Location: My Sisters' Place, 566

Dundas St. London, ON. N6B

1W8

Contact information:

www.facebook.com/mysistersplacelondon

www.mysistersplacelondon.ca

Twitter: @mysistersplace

Booking tables: Lynn Blumas, M.E. Program

Coordinator 519-679-9570 ext. 25

l.blumas@wotch.on.ca

*M.E. is a group of women at risk of homelessness
who gather to create original jewelry and accesso-*

Without you, there is no ME!



My Sister's Place Micro-Enterprise

Original and Creative Jewelry

Tuesdays to Thursdays
10am - 12pm and 1pm - 3pm
566 Dundas Street

Book a table to tell M.E. products
at your event or corporate meeting!
Contact Lynn Blumas,
M.E. Program Coordinator
(519) 679 - 9570 ext. 25
l.blumas@wotch.on.ca

You can find us at:

facebook.com/mysistersplacelondon
@mysistersplace
www.mysistersplacelondon.ca



MSP

My Sisters' Place

Without you, there is no ME!
The artisans creating this jewelry
are women in the risk of homelessness



My Sisters' Place



Original

Creative



Without you
There is no ME!

Facebook Page: www.facebook.com/mysistersplacelondon
Twitter: @mysistersplace
Website: www.mysistersplacelondon.ca



Tuesdays to Thursdays 10am - 12pm and 1pm - 3pm
at My Sisters' Place, 566 Dundas Street

People can book a table to sell M.E. products at our events or corporate meetings.
To book tables or for more information contact: Lynn Blumas, M.E. Program Coordinator,
for details at 519-679-9570 ext. 25 | l.blumas@wotch.on.ca



Buy
Beautiful
Jewelery

Support
at Risk Women

Micro-Enterprise (M.E.) is a collective of women who gather to create original jewelry. M.E. participants are homeless or are at risk of homelessness. The M.E. program empowers women to learn a full complement of skills that may lead to employment or entrepreneurial opportunities.

CONTACT US:

Facebook: [facebook.com/mysistersplacelondon](https://www.facebook.com/mysistersplacelondon)

Twitter: [@mysistersplace](https://twitter.com/mysistersplace)

Website: www.mysistersplacelondon.ca

BOOK TO SELL M.E. PRODUCTS:

Lynn Blumas, M.E. Program Coordinator,

519-679-9570 ext. 25

lblumas@wotch.on.ca

VISIT US:

Tuesdays to Thursdays

10am - 12pm and 1pm - 3pm

My Sisters' Place, 566 Dundas Street



Without you, there is no ME!